A historical map of the Lower Mississippi River region, showing the meander belt. The map is titled "MISSISSIPPI RIVER MEANDER BELT" and "ANCIENT COURSE". It features a complex network of red, yellow, and green lines representing the river's historical paths. A legend in the top right corner explains the symbols used. The map is labeled "PLATE 22" and "SHEET NO." in the top right corner.

Lower Mississippi River Conservation Committee --- HATCHIE/LOOAHATCHIE ECOSYSTEM RESTORATION STUDY

*Public Meeting
03 October 2022
Marion City Hall
Marion, AR*

Angeline Rodgers
Coordinator, Lower Mississippi River
Conservation Committee

Project Leader, USFWS Lower Mississippi
River Fish & Wildlife Conservation Office



MEMBER STATES



Example COOPERATING PARTNERS



- Established in 1994
- 6 States, 12 Agencies
- Incorporated as 501c3
- Information Exchange
- Conservation Planning
- Habitat Restoration



Lower Mississippi River Resource Assessment -Authorization-

Section 402 of WRDA 2000:

The Secretary, in cooperation with the Secretary of the Interior and the States of Arkansas, Illinois, Kentucky, Louisiana, Mississippi, Missouri, and Tennessee, shall undertake for the Lower Mississippi River system:

- (1) an assessment of information needed for river-related management;
- (2) an assessment of natural resource habitat needs;
- (3) an assessment of the need for river-related recreation and access.

Cost:

\$1.67 Million

- \$1.25M Federal
- \$416,000 non-Federal

RESTORING AMERICA'S GREATEST RIVER

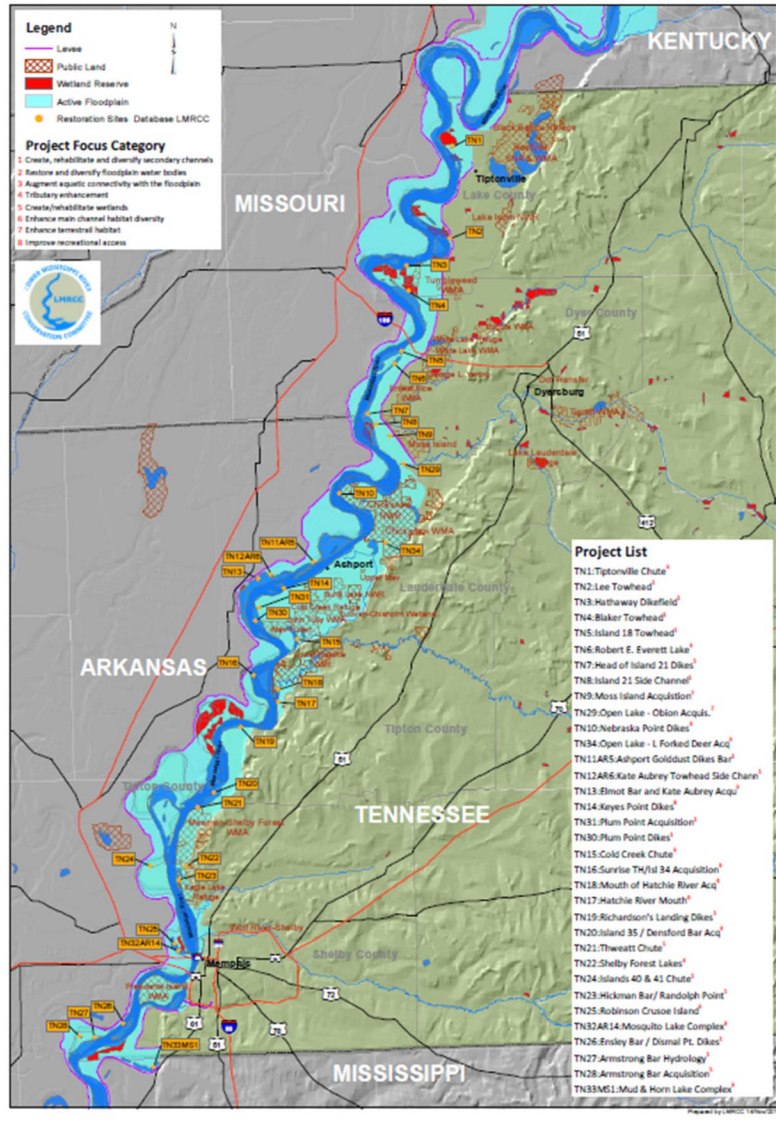
A HABITAT RESTORATION PLAN FOR THE LOWER MISSISSIPPI RIVER



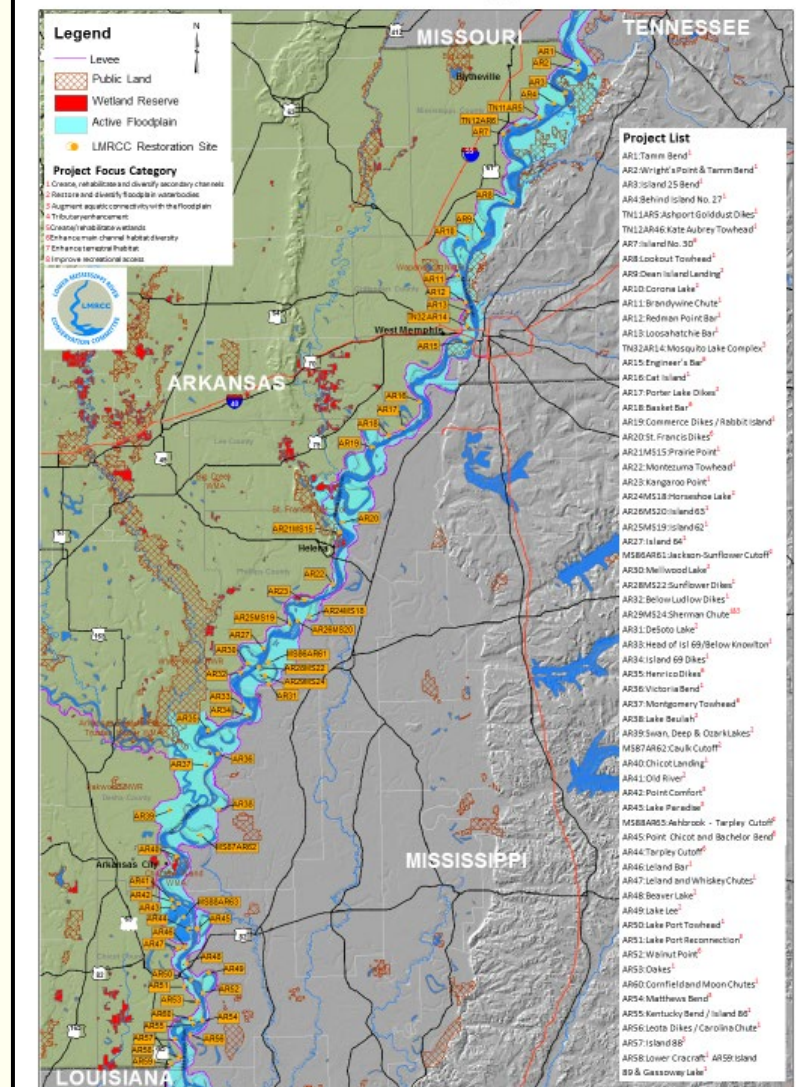
2004 Restoring America's Greatest River Plan (revised in 2015)

Available online at
www.lmrcc.org

Tennessee Habitat Projects in Active Floodplain of the Lower Mississippi River



Arkansas Habitat Projects in Active Floodplain of the Lower Mississippi River

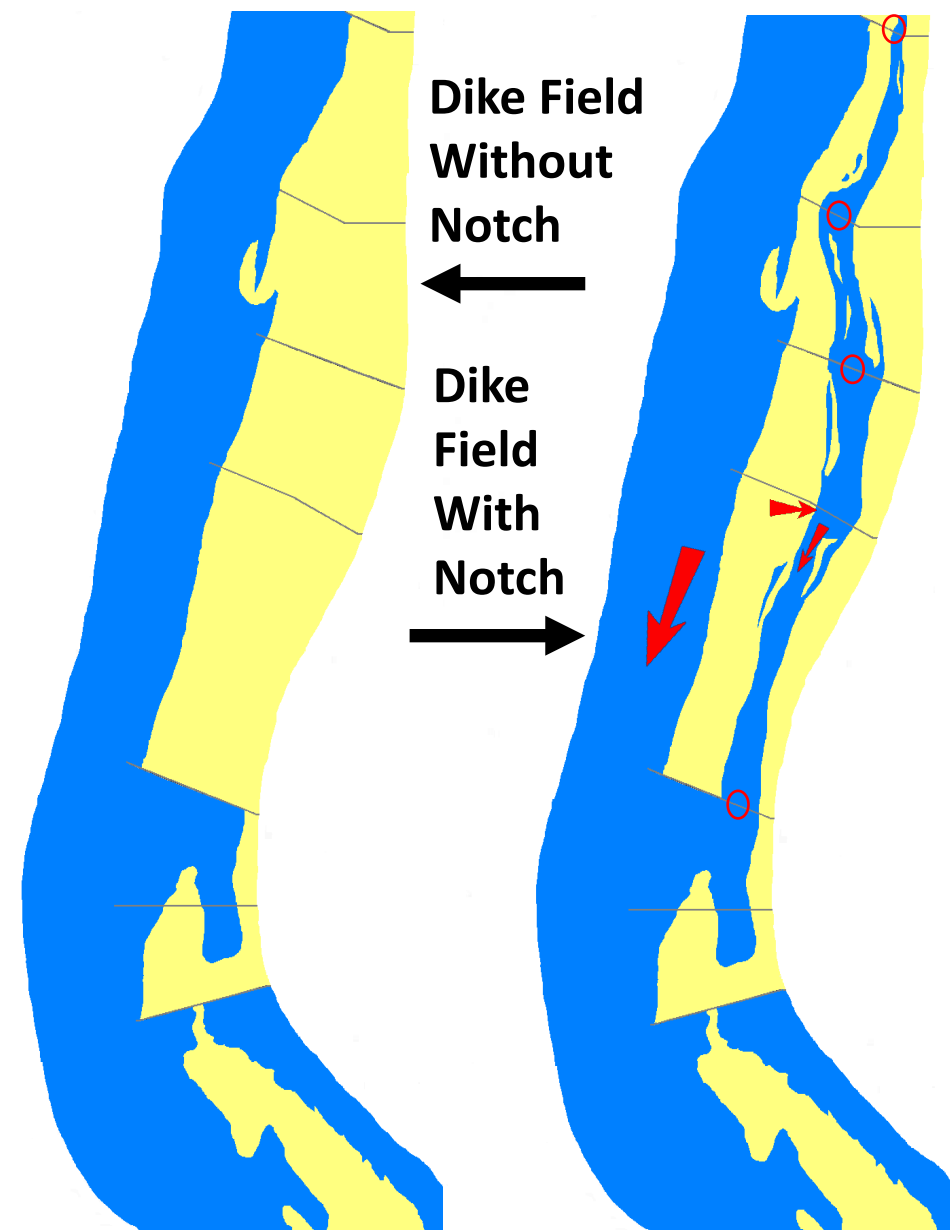
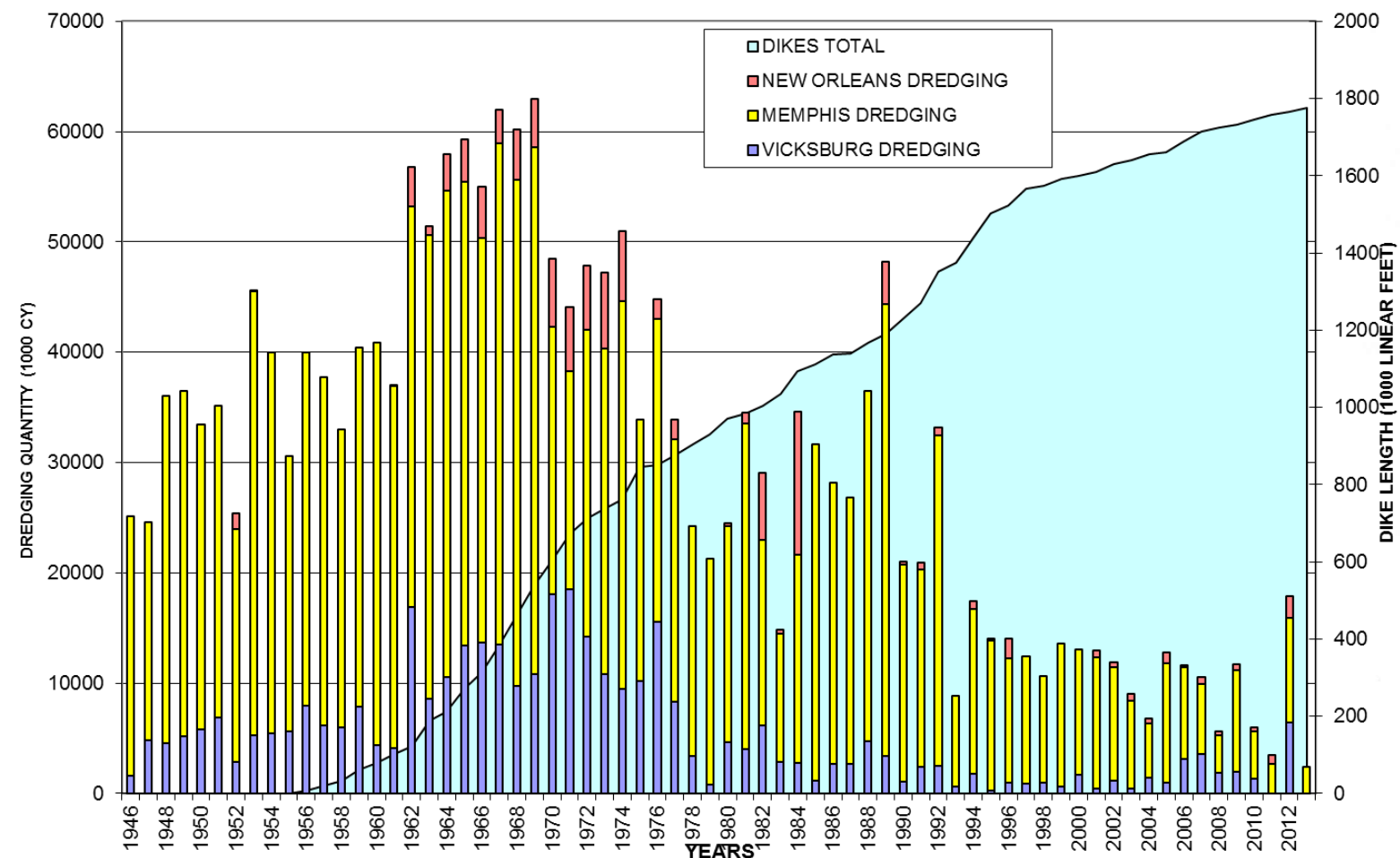




Project Category	# of Projects per Category
Restore Secondary Channels	73
Restore Lakes/Backwaters	69
Notch Dikes – Main Channel	39
Improve Boat Ramp Access	21
Conserve/Restore Gravel Bars	10
Procure Batture Land	10
Restore Borrow Pits	5
Construct Chevrons	5
Construct Hardpoints	4
Restore Tributary Mouth	2
Construct/Restore Islands	1
TOTAL PROJECTS	239



CUMULATIVE DIKE LENGTHS & DREDGING MISSISSIPPI RIVER

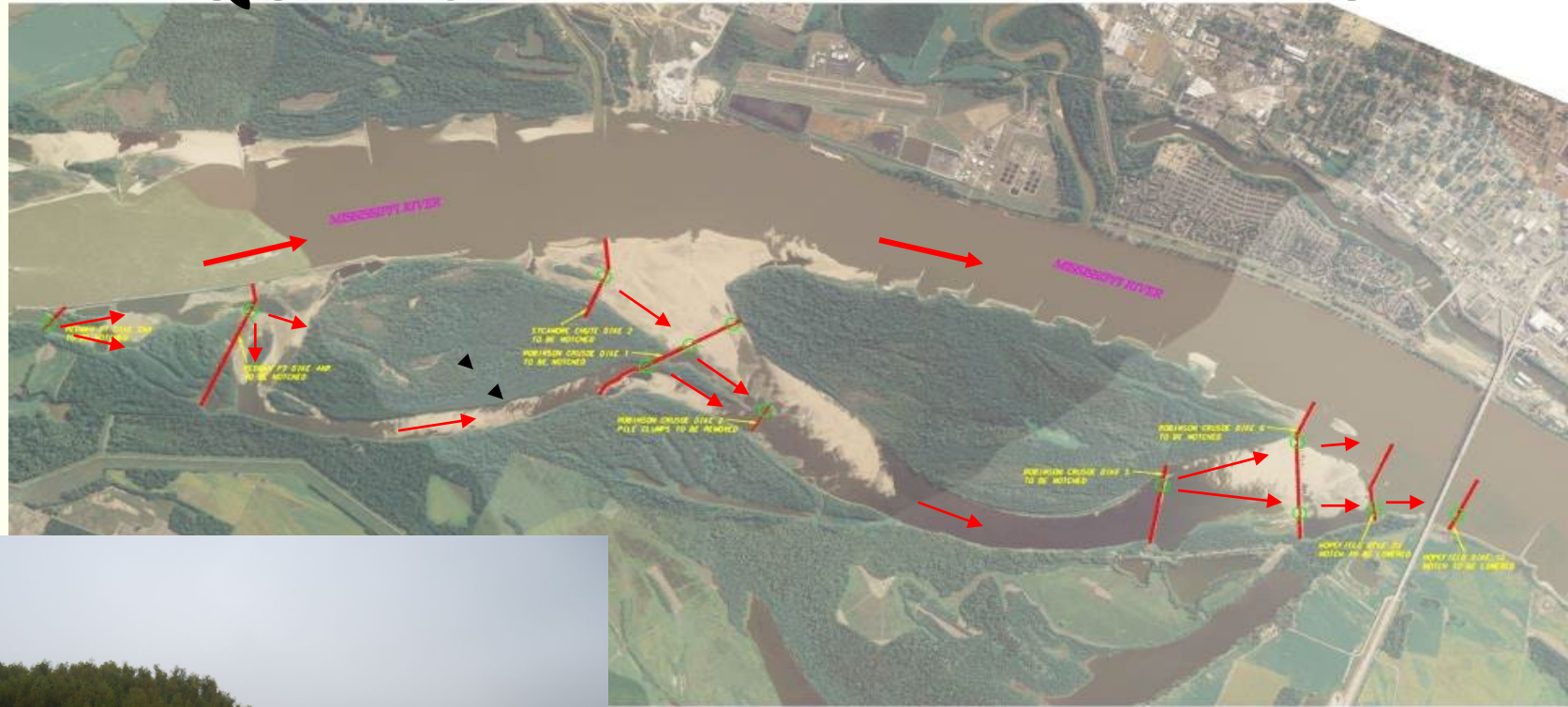


Loosahatchie Bar



LOOAHATCHIE BAR

AQUATIC HABITAT REHABILITATION



2008

- 22 Days
- 8 Dikes (11 Notches)
- 11.25 Miles

DENSFORD

AQUATIC HABITAT REHABILITATION

August 2022



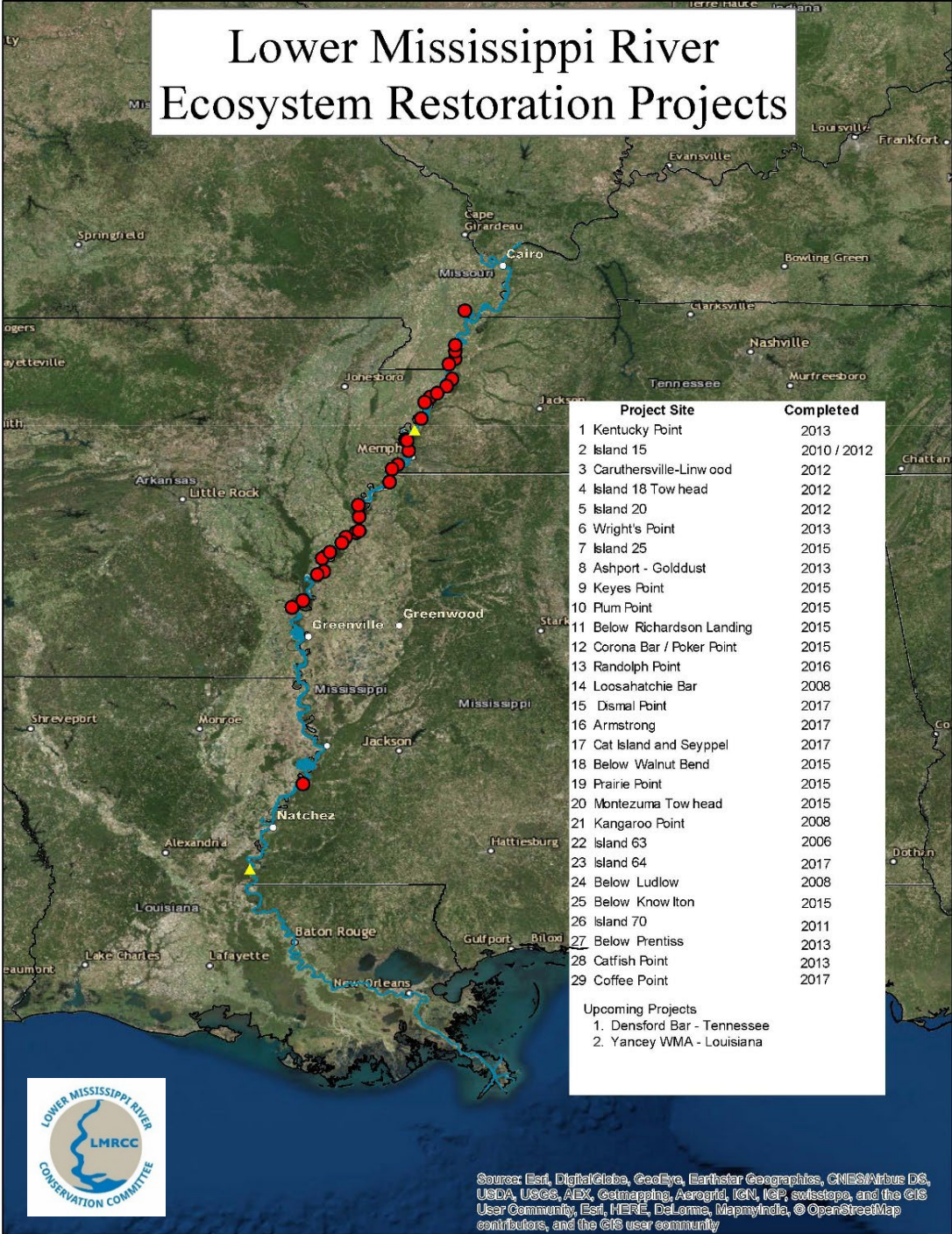
LOWER CRACRAFT AQUATIC HABITAT REHABILITATION






September 2022



<https://www.youtube.com/user/LMRCCvideos>

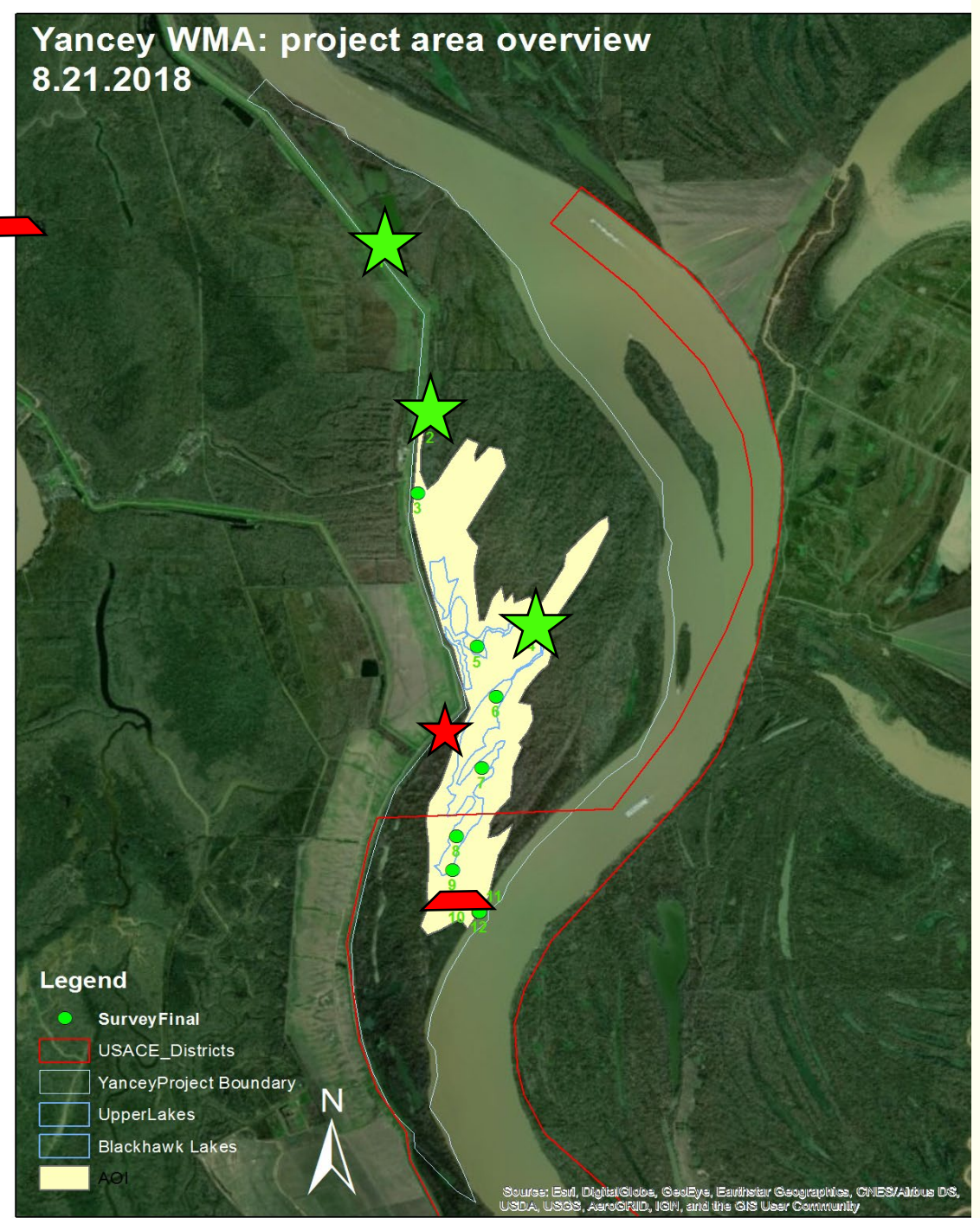


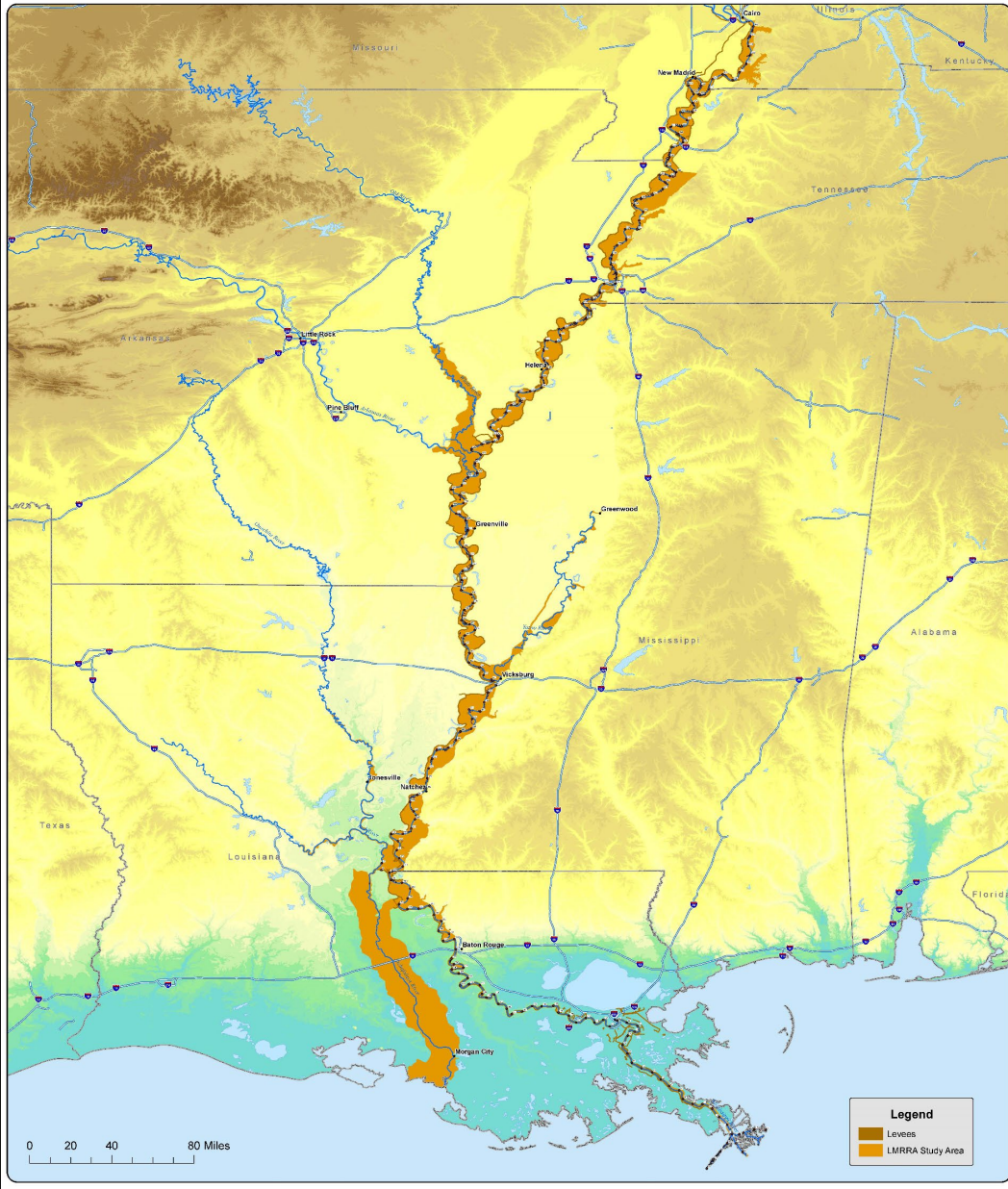
R.K. Yancey Blackhawk Scar Lakes Ecosystem Restoration and Monitoring

- 700 acres – restored floodplain hydrology – weir replacement 
- 5 miles – stream reconnection – 3 culvert replacements 
- Improve boat launch access 
- Habitat use, abundance, life history of Alligator gar and changes in trophic ecology associated with gar floodplain use in restored areas
- Provide management recommendations to the general public based on lessons learned



Yancey WMA: project area overview
8.21.2018





Lower Mississippi River Resource Assessment

2012 - 2016

Assessments of:

- (1) **Information** needed for river-related management;
- (2) Natural resource **habitat** needs;
- (3) Need for river-related **recreation** and **access**.



LMRRA Recommendations

Data Science and
Communications Program

Habitat Restoration and
Management Program

Recreation Program

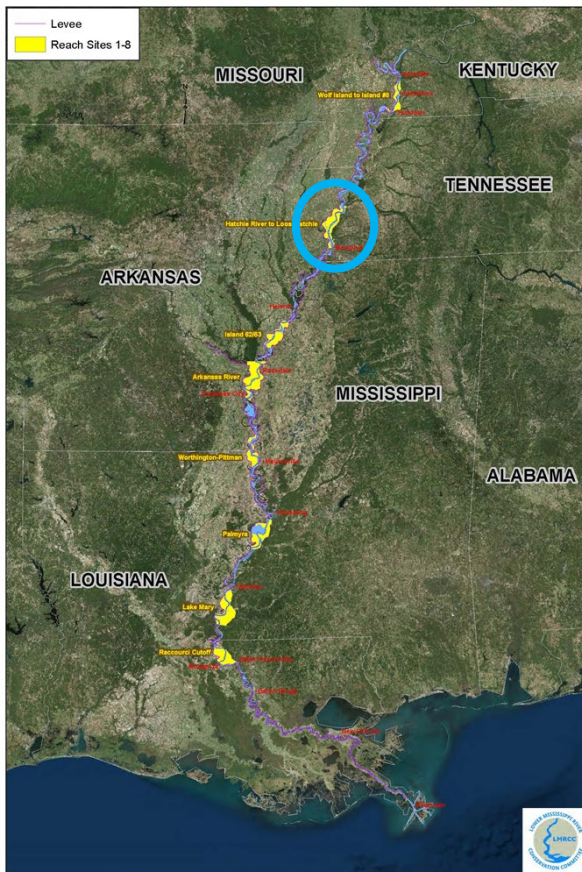
Data Science and Communications Program				
Recommendation		Lead Organization	Cost	Value
DISC 1	Science Technology Information Center	USGS	\$2 million/year	Promote interagency cooperation, encourage research, foster public interest, and support other recommendations.
DISC 2	Sediment Study	USACE	\$4 million/year	Support management plans, better manage dredging and coastal restoration.
DISC 3	Water Quality Monitoring Program	USGS & EPA	\$2 million/ year	Provide clean water for people, industry, and habitat.
DISC 4	Tributary Watershed Studies	USACE	9 @ \$1-\$5 million each	Develop plans to manage tributaries for habitat, water quality, sediment, water supply, navigation and recreation.
DISC 5	Ecological Inventory	USACE & USFWS	\$1.7 million	Provide information to support restoration.
Habitat Restoration and Management Program				
Recommendation		Lead Organization	Cost	Value
HRMP 1	Conservation Reach Studies	USACE	8 @ \$3 million each	Restore aquatic (side channel, oxbow, main channel, islands, and sandbars) and terrestrial (wetlands, bottomland hardwoods, and floodplain) habitats for native species and especially federally listed species.
HRMP 2	Aquatic Habitat Restoration Studies	USACE & USFWS	125 @ \$200,000 to \$ 15 million (maximum)	Restore individual sites for native species.
HRMP 3	Terrestrial Habitat Program	USDA & LMVJV	\$18,000,000	Restore floodplain habitat.
HRMP 4	Invasive Species Program	MICRA & ANSTF	Part of larger effort	Promote and protect native species.
Recreation Program				
Recommendation		Lead Organization	Cost	Value
RP 1	Boat Ramps	LMRCC and others	\$50,000 - \$750,000 each	Increase safety and meet recreation demand.
RP 2	Bicycle Trails	NGOs	variable	Increase safety and meet recreation demand.
RP 3	Riverfront Parks	Local Communities	variable	Promote community cohesiveness and meet demand.
RP 4	Riverboat Landings	Local Communities	variable	Provide safe, accessible opportunities and support local economic development.
RP 5	Marketing	NPS, MRPC, NGOs	\$2 million	Promote river use and encourage economic development.
RP 6	Lodging and Dining	Private Enterprise	variable	Meet demand and support economic development.
RP 7	Outfitters and Guides	Private Enterprise	variable	Increase safety, meet demand and support economic development.

Water Resources Development Act of 2018

Sect. 202 ADDITIONAL STUDIES

- Lower Mississippi River; Missouri, Kentucky, Tennessee, Arkansas, Mississippi, and Louisiana
- Secretary is authorized...determine the **feasibility of habitat restoration for each of the eight reaches** identified as priorities in the report prepared by the Secretary pursuant to Section 402 of the WRDA of 2000, "Lower Mississippi River Resource Assessment; Final Assessment..."

LMRRA Conservation Reach Study
Restoration Site Reaches 1-8

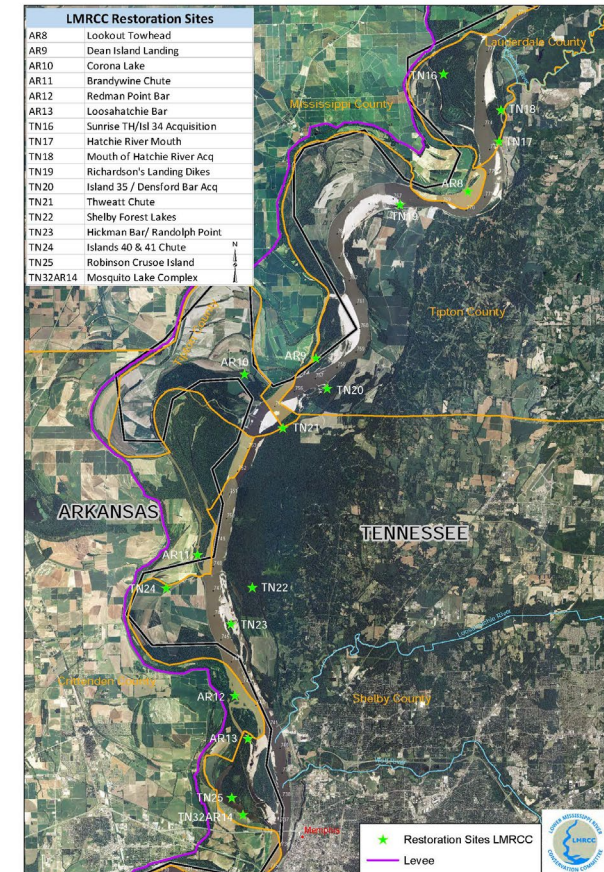


2021 Feasibility Study New Start

- Memphis District - 3x3x3 plan
- LMRCC Cost-Share Partner (50/50)
- AR / TN



LMRRA Conservation Reach Study
Hatchie River to Loosahatchie - River Mile 775 to 736



Contact Information

Angeline Rodgers
angeline_rodgers@fws.gov
(601) 618-6034

<http://www.lmrcc.org>

<https://www.youtube.com/user/LMRCCvideos>

<https://www.fws.gov/office/lower-mississippi-river-fish-and-wildlife-conservation>

